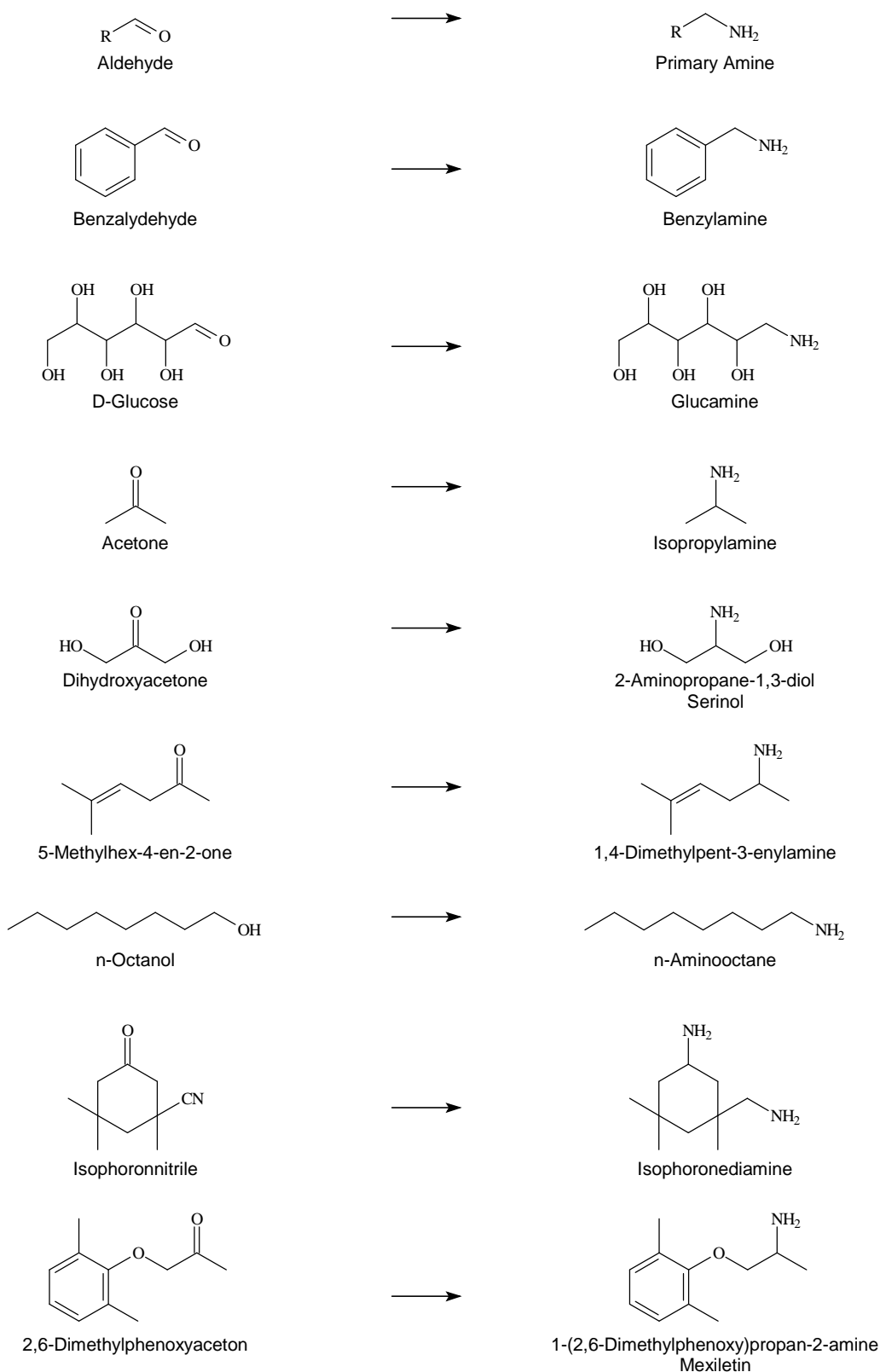


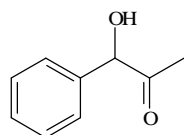
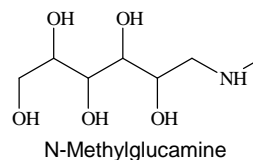
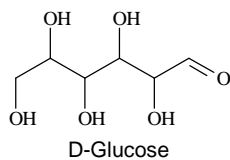
Artikel I. REDUCTIVE AMINATION

a) Reductive Amination with Ammonia

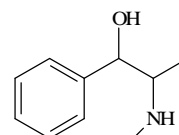


Artikel II. REDUCTIVE AMINATION

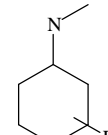
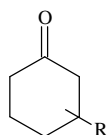
b) Reductive Amination with Methylamine



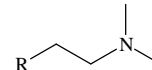
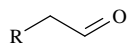
Phenylacetylcarbinol



2-(Methylamino)-1-phenylpropan-1-ol

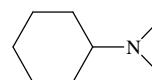
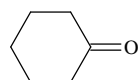


c) Reductive Amination with Dimethylamine



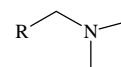
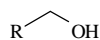
Aliphatic aldehyde

Aliphatic tertiary amine



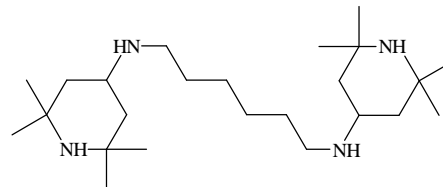
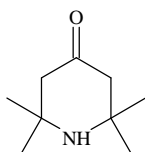
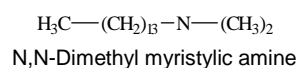
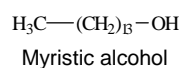
Cyclohexanone

N,N-Dimethylcyclohexylamine



Aliphatic alcohol

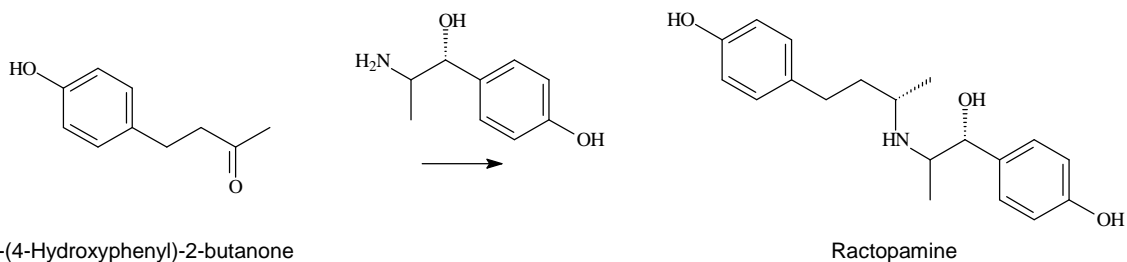
N,N-Dimethyl alkyl amine



Triactoneamine

1,6-Di-(2,2,6,6-tetramethyl-piperidine)-hexamethylenediamine

Artikel III. REDUCTIVE AMINATION



d) Reductive Amination with Ethylamine

